


# ZS\_SRZS series pumps

The **ZS\_SRZS** side channel centrifugal pumps are multi-cellular self-priming side channel pumps with **low NPSH**. This range of pumps allows conveying liquids containing gas and has a centrifugal booster impeller.

This pump combines the advantages of a centrifugal pump with a side channel pump.

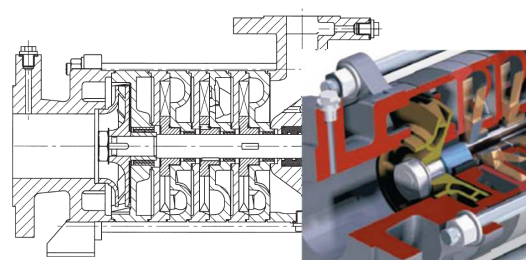
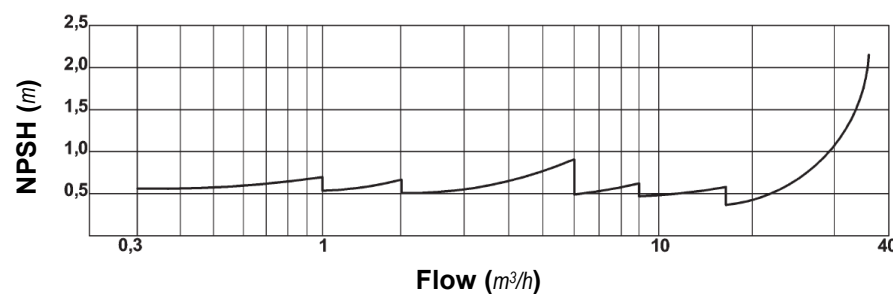
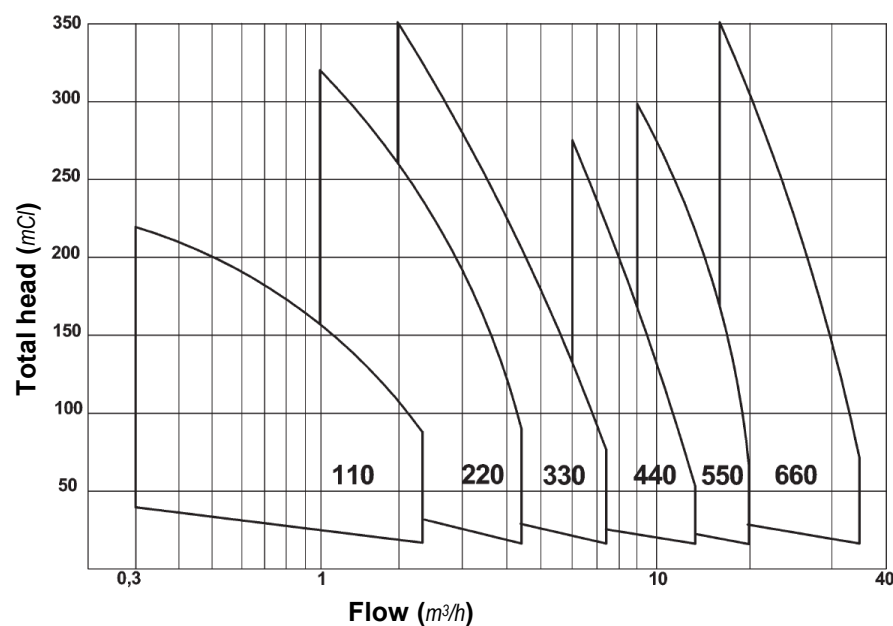
This pump technology has the advantage of combining low NPSH values and self-priming qualities (*including with biphasic mixes*), along with the advantage of not stalling in the event of cavitation.

## LIMITS OF USE

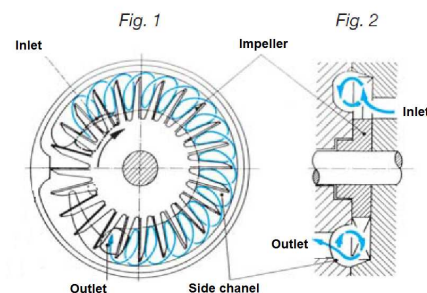
- Flow rate: 0.3 m<sup>3</sup>/h to 35 m<sup>3</sup>/h
- Total head: 5 to 350 mCl
- Operating temperature: - 40 to 220°C
- Operating pressure: < 40 bar
- Speed: < 1750 rpm
- ATEX certification:  II 2 G II B T3/T4



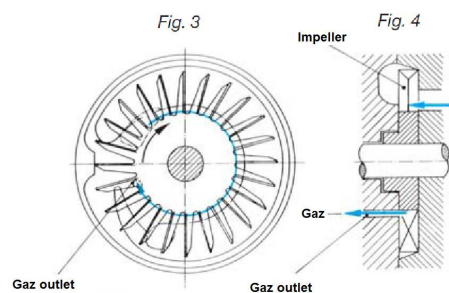
## SELECTION CURVES



liquid



Gaz



## BUSINESS ACTIVITIES AND PRINCIPAL USE

Chemical and fine chemicals industries - Pharmaceutical industry - Cosmetic industry - Paper-making industry - Automotive industry - Metalworking industry - Integration companies - Transferring corrosive liquids or solvents - Tank unloading - General use, etc.

**POMPES GROSCLAUDE**

# SPECIFICATIONS

## Basic components

Composant	Material Code				
	10	12	32	60	62
Suction casing	Cast iron FT25	Cast iron FT25	SS 316L	Cast iron GS	Cast iron GS
Discharge casing	Cast iron FT25	Cast iron FT25	SS 316L	Cast iron GS	Cast iron GS
Stage casing	Cast iron FT25	Cast iron FT25	Duplex - 1.4470	Cast iron GS	Cast iron GS
Side Channel casing	Cast iron FT25	Cast iron FT25	Duplex - 1.4470	Cast iron GS	Cast iron GS
Foot	Cast iron GS	Cast iron GS	Cast iron GS	Cast iron GS	Cast iron GS
Shaft	SS 420	SS 420	SS 316Ti	SS 420	SS 420
Impeller	Cu Zn 40 Al 1	Z20CN17.2M	SS 316Cb	Cu Zn 40 Al 1	Z20CN17.2M
Bearing support	Cast iron FT20	Cast iron FT20	Cast iron FT20	Cast iron FT20	Cast iron FT20
Bearing cover open	Cast iron FT20	Cast iron FT20	Cast iron FT20	Cast iron FT20	Cast iron FT20
Bearing cover closed	Cast iron FT20	Cast iron FT20	Cast iron FT20	Cast iron FT20	Cast iron FT20
Casing gaskets	Teflon	Teflon	Teflon	Teflon	Teflon
Bearing bush	Bronze	Carbon	Carbon	Bronze	Carbon

## Mechanical seal:

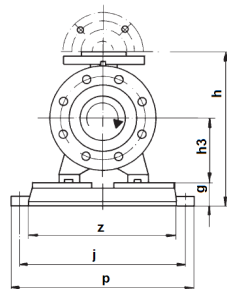
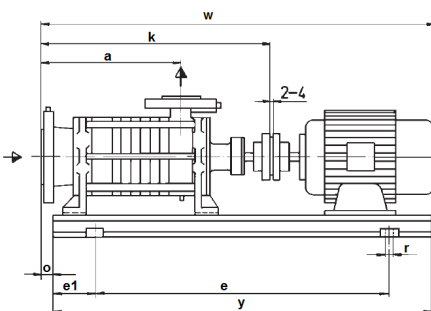
Standardised mechanical seal (DIN 24960) Simple, double back to back, tandem or quenched assembly  
 Non-compensated for outlet pressures less than 16 bar or compensated for pressures above .  
 Friction face: Silicon carbide on carbon with the possibility to change on request  
 O-ring material: According to the type of liquid conveyed, we'll adapt the type of O-ring

**SERO**  
PumpSystems

## Pump inlet and outlet connections

Size	Inlet	Outlet
110	DN40 PN40	DN20 PN40
220	DN65 PN40	DN32 PN40
330	DN65 PN40	DN32 PN40
440	DN80 PN40	DN40 PN40
550	DN100 PN40	DN50 PN40
660	DN100 PN40	DN65 PN40

# OVERALL DIMENSIONS



Size	Motor Size	Power	Weight (kg)	B-S	Group	a	k	o	h	h3	w	e	el	g	i	p	r	y	z
111	71	0.37	16	35	195	367	25	240	100	599	445	77.5	40	255	290	15	600	235	
112	80	0.55	18	45	229	401	25	245	100	699	550	90	45	305	340	15	730	270	
113	80	0.75	20	48	263	435	25	245	100	763	550	90	45	305	340	15	730	270	
114	90	1.1	22	52	297	469	25	245	100	789	550	90	45	305	340	15	730	270	
115	90	1.5	24	57	331	503	25	245	100	823	550	90	45	305	340	15	730	270	
116	100	2.2	26	63	365	542	25	245	100	857	650	100	45	308	340	15	850	280	
117	100	3	26	69	399	576	25	245	100	940	650	100	45	308	340	15	850	280	
118	112	4	30	75	433	610	25	250	100	974	730	150	50	385	420	18	1030	320	
221	80	0.5	30	37	213	414	25	289	112	883	550	90	45	305	340	15	730	270	
222	90	0.75	33	43	253	454	25	289	112	918	550	90	45	305	340	15	730	270	
223	100	1.1	36	49	293	491	25	289	112	958	650	100	45	308	340	15	850	280	
224	100	1.5	39	82	333	534	25	289	112	998	650	100	45	308	340	15	850	280	
225	112	2.2	42	94	373	574	25	294	112	1022	730	150	50	385	420	18	1030	320	
226	112	3	45	111	413	614	25	294	112	1062	730	150	50	385	420	18	1030	320	
227	125	5.5	48	114	453	654	25	294	112	1102	730	150	50	385	420	18	1030	320	
228	132	7.5	51	157	493	694	25	314	132	1142	930	150	55	400	445	20	1230	340	

Size	Motor Size	Power	Weight (kg)	B-S	Group	a	k	o	h	h3	w	e	el	g	i	p	r	y	z
331	80	0.75	30	58	213	424	25	289	112	883	550	90	45	305	340	15	730	270	
332	90	1.1	33	63	253	454	25	289	112	918	550	90	45	305	340	15	730	270	
333	100	1.5	36	69	293	494	25	289	112	958	650	100	45	308	340	15	850	280	
334	100	2.2	39	86	333	534	25	289	112	998	650	100	45	308	340	15	850	280	
335	112	3	42	108	373	574	25	294	112	1022	730	150	50	385	420	18	1030	320	
336	112	4	45	111	413	614	25	294	112	1062	730	150	50	385	420	18	1030	320	
337	125	5.5	48	114	453	654	25	294	112	1102	730	150	50	385	420	18	1030	320	
338	132	7.5	51	157	493	694	25	314	132	1142	930	150	55	400	445	20	1230	340	
441	100	1.1	36	75	268	464	35	317	132	984	550	90	45	305	340	15	730	270	
442	100	1.5	42	89	323	519	35	317	132	1024	550	100	45	308	340	15	850	280	
443	112	2.2	48	109	378	574	35	317	132	1064	650	100	45	308	340	15	850	280	
444	112	3	54	141	433	629	35	322	132	1077	730	150	50	385	420	18	1030	320	
445	125	5.5	60	155	488	684	35	327	132	1117	730	150	55	400	445	20	1230	340	
446	132	7.5	66	209	543	739	35	335	150	1267	930	150	55	400	445	20	1230	340	
447	160	11	72	244	598	794	35	400	160	1433	940	230	100	550	590	28	1400	490	
448	160	15	78	270	653	849	35	420	180	1500	940	230	100	550	590	28	1400	490	
551	112	2.2	48	109	378	574	35	317	132	1064	650	100	45	308	340	15	850	280	
552	125	5.5	60	155	488	684	35	327	132	1117	730	150	55	400	445	20	1230	340	
553	132	7.5	66	209	543	739	35	335	150	1267	930	150	55	400	445	20	1230	340	
554	160	11	72	244	598	794	35	400	160	1433	940	230	100	550	590	28	1400	490	
555	160	15	78	270	653	849	35	420	180	1500	940	230	100	550	590	28	1400	490	
556	180	18.5	109	301	605	843	40	425	160	1471	940	230	100	550	590	28	1400	490	
557	180	22	99	391	605	843	40	445	180	1567	940	230	100	600	640	28	1600	540	
558	200	30	129	361	830	1068	40	445	180	1567	1060	270	100	600	640	28	1600	540	
661	125	5.5	60	155	488	684	35	327	132	1117	730	150	55	400	445	20	1230	340	
662	132	7.5	66	209	543	739	35	335	150	1267	930	150	55	400	445	20	1230	340	
663	160	11	72	244	598	794	35	400	160	1433	940	230	100	550	590	28	1400	490	
664	160	15	78	270	653	849	35	420	180	1500	940	230	100	550	590	28	1400	490	
665	180	18.5	109	301	605	843	40	425	160	1471	940	230	100	550	590	28	1400	490	
666	200	30	129	361	830	1068	40	445	180	1567	1060	270	100	600	640	28	1600	540	
667	225	37	142	461	968	1230	45	480	200	1788	1200	300	100	670	710	28	2000	610	
668	250	55	167	538	1140	1420	45	505	225	2003	1400	300	100	670	710	28	2000	610	

# PART NUMBER

Size	SRZ	33	2	W	G15	T	32	3	4	I	27135
Type	Size	N° of stage	Ball bearing	Montaje de estanqueidad	Mechanical seal gasket	Material code	Motor	Power (kW)	4 4 poles (# 1450 rpm)	Protection	Serial N°
11	1	W 1	G11 Unbalanced single	V FPM						A ATEX	
22	2		G12 Balanced single	E EPDM						I non-ATEX	
...	...		G15 Unbalanced double	T FPM jacket PTFE							
66	8		G16 Balanced double	...							
			Q31 Unbalanced single								
			Q32 Balanced single								

# POMPES GROSCLAUDE

Parc du chêne - 29, rue du 35<sup>ème</sup> régiment d'aviation  
 69 500 BRON – FRANCE

Tel: (33) 4 72 37 94 00

Fax: (33) 4 72 37 94 01

E-mail: [info@pompes-grosclaude.com](mailto:info@pompes-grosclaude.com)

Web: [www.pompes-grosclaude.com](http://www.pompes-grosclaude.com)

