


# R0 vertical pumps

The centrifugal pumps in the **R0** series are specially designed for a wide range of applications requiring construction in stainless steel or finer materials.

The **R0** vertical pumps are assembled on a support plate and have delivery pipes on the upper area. The length under the mounting plane can be adapted to your requirements ( *maximum 500 mm* ).

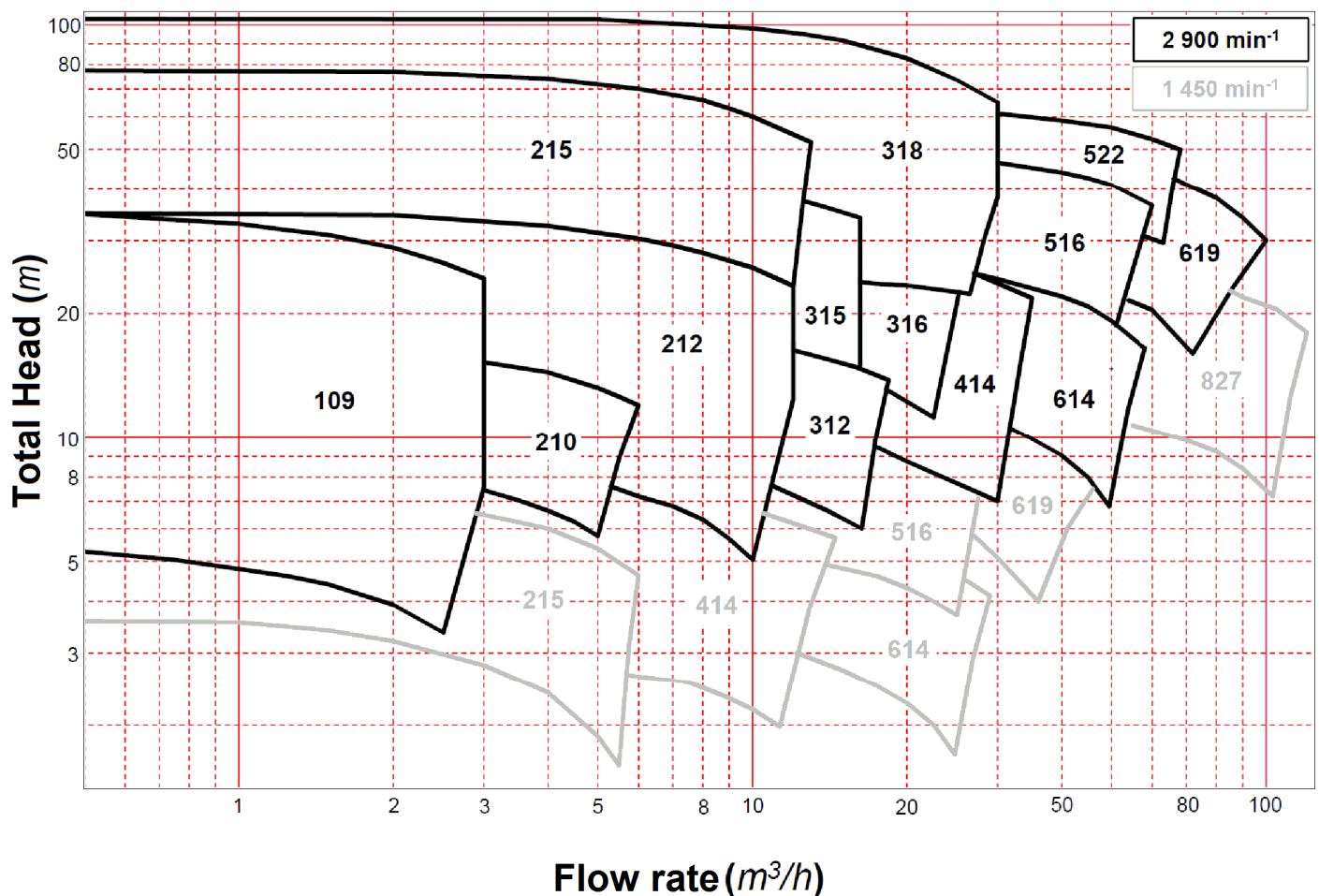
The pump hydraulics can be either monocellular or multicellular according to the circuit needs.

## LIMITS OF USE

- Flow rate: 100 l/h to 100 m<sup>3</sup>/h
- Total head: <65 m
- Operating temperature: - 40°C to + 200°C
- Operating pressure: < 10 bar
- Speed: < 3600 min<sup>-1</sup>
- ATEX certification:  II 2 G II B T3/T4 T4



## SELECTION CURVES



## BUSINESS ACTIVITIES AND PRINCIPAL USE

Wash water containing degreasing agents, Surface treatment industry, Lifting acid solutions, Chemical nickel plating, Phosphating...

# SPECIFICATIONS

## Basic components

- Pump body 316L Stainless steel
- Cover/diffuser/flange 316L Stainless steel
- Impeller/Shaft 316L Stainless steel

To better respond to your requirements, our expertise in the metalworking industry is at your service:

*Hastelloy, Duplex, Inconel, Monel, Titanium...*

## Motor

- Protection IP55/ATEX
- Three-phase (other voltage on request)

## Paint

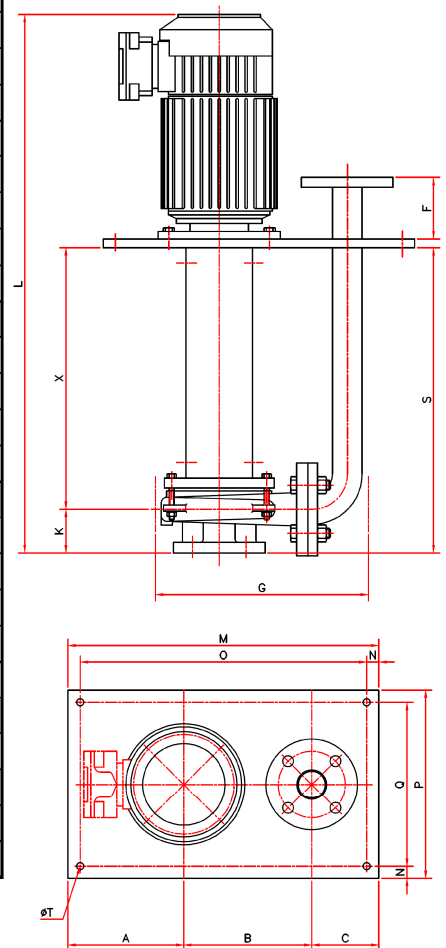
- Primer + final paint (RAL 5000)

(can be modified on request)



# OVERALL DIMENSIONS

Type	Power (kW)	M	O	P	Q	T	N	K	A	B	C	F	G	S Max.	X	L	Inlet	Outlet
R0 109	0,55	310	280	240	210	12	15	54	120	150	40	50	235	500	446	810	DN20PN16	DN20PN16
R0 210	0,75	310	280	240	210	12	15	45	120	150	40	50	255	500	455	810	DN20PN16	DN20PN16
R0 212	0,75	330	300	250	220	12	15	80	120	160	50	80	290	500	420	811	DN25PN16	DN25PN16
	1,5	330	300	250	220	12	15	80	120	160	50	80	290	500	420	883	DN25PN16	DN25PN16
R0 215	0,75	345	315	250	220	12	15	60	125	170	50	70	310	500	440	810	DN25PN16	DN25PN16
	1,5	345	315	250	220	12	15	60	125	170	50	70	310	500	440	882	DN25PN16	DN25PN16
R0 312	0,75	355	325	250	220	12	15	75	125	180	50	70	300	500	425	810	DN32PN16	DN32PN16
	1,5	355	325	250	220	12	15	75	125	180	50	70	300	500	425	882	DN32PN16	DN32PN16
R0 316	1,1	440	410	340	310	12	15	80	180	210	50	85	370	500	420	882	DN50PN16	DN32PN16
	4	440	400	340	300	12	20	80	180	210	50	85	370	500	420	920	DN50PN16	DN32PN16
	5,5	440	400	340	300	12	20	80	180	210	50	85	370	500	420	952	DN50PN16	DN32PN16
R0 414	1,5	430	390	240	200	12	20	70	150	210	70	100	360	500	430	882	DN40PN16	DN40PN16
	3	430	390	290	250	12	20	70	150	210	70	100	360	500	430	882	DN40PN16	DN40PN16
R0 516	5,5	520	480	380	340	14	20	100	190	260	70	100	440	500	400	953	DN80PN16	DN50PN16
	9	545	505	430	390	14	20	100	215	260	70	100	440	500	400	1066	DN80PN16	DN50PN16
R0 522	15	565	525	430	390	14	20	115	215	280	70	100	490	500	385	1013	DN65PN16	DN50PN16
	18,5	565	525	430	390	14	20	115	215	280	70	100	490	500	385	1068	DN65PN16	DN50PN16
R0 614	4	500	460	330	290	14	20	80	160	270	70	110	470	500	420	923	DN65PN16	DN65PN16
	5,5	520	480	380	340	14	20	80	180	270	70	110	470	500	420	955	DN65PN16	DN65PN16
R0 619	11	610	570	430	390	14	20	80	215	315	80	110	515	500	420	1013	DN80PN16	DN65PN16
	15	610	570	430	390	14	20	80	215	315	80	110	515	500	420	1013	DN80PN16	DN65PN16
R0 822	7,5	650	610	420	380	14	20	120	215	355	80	120	600	500	380	955	DN100PN16	DN80PN16
R0 827	9	725	685	470	430	14	20	125	250	385	90	120	650	500	375	955	DN100PN16	DN80PN16
	11	750	710	470	430	14	20	125	250	385	90	120	650	500	375	1013	DN100PN16	DN80PN16



Motor 1500 min-1

Dimensions shown are for reference only and can be different according to the type of motor used

# PART NUMBER

R0	109	/2	X	-	95/90	-	0,37	-	2	A	-	12555
Type	Size	Number of impellers	Material in contact with the liquid		Ø of the impellers		Power in kW		Motor installed	Protection		Serial No.
R0 Economical	106	1 impeller	X Stainless Steel 316L						2 2 poles (# 2 900 rpm)	A ATEX		
R1 Long Shaft	109	/2 2 impellers	U Duplex						4 4 poles (# 1 450 rpm)	I non-ATEX		
R14 Particules	209	/3 3 impellers	C Hastelloy C276									
	...		Ti Titanium									
	614											
	619											
	827											

# POMPES GROSCLAUDE

Parc du chêne - 29, rue du 35<sup>ème</sup> régiment d'aviation  
69 500 BRON – FRANCE

Tel: (33) 4 72 37 94 00

Fax: (33) 4 72 37 94 01

E-mail: [info@pompes-grosclaude.fr](mailto:info@pompes-grosclaude.fr)

Web: [www.pompes-grosclaude.fr](http://www.pompes-grosclaude.fr)

