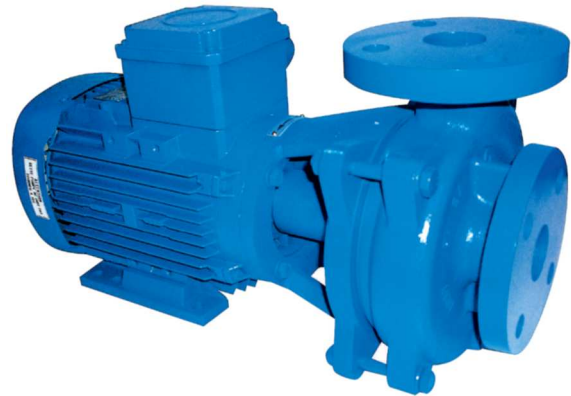


MF series pumps


The mono- and multicellular **MF** series centrifugal pumps are specially designed for a large range of industrial uses.

Thanks to their horizontal **mono-block** design, the **MF** series pumps don't take up a lot of space, making their integration into compact Skid types of assemblies easier. The pump and the motor form a mono-block set connected by flanges, with a common shaft.

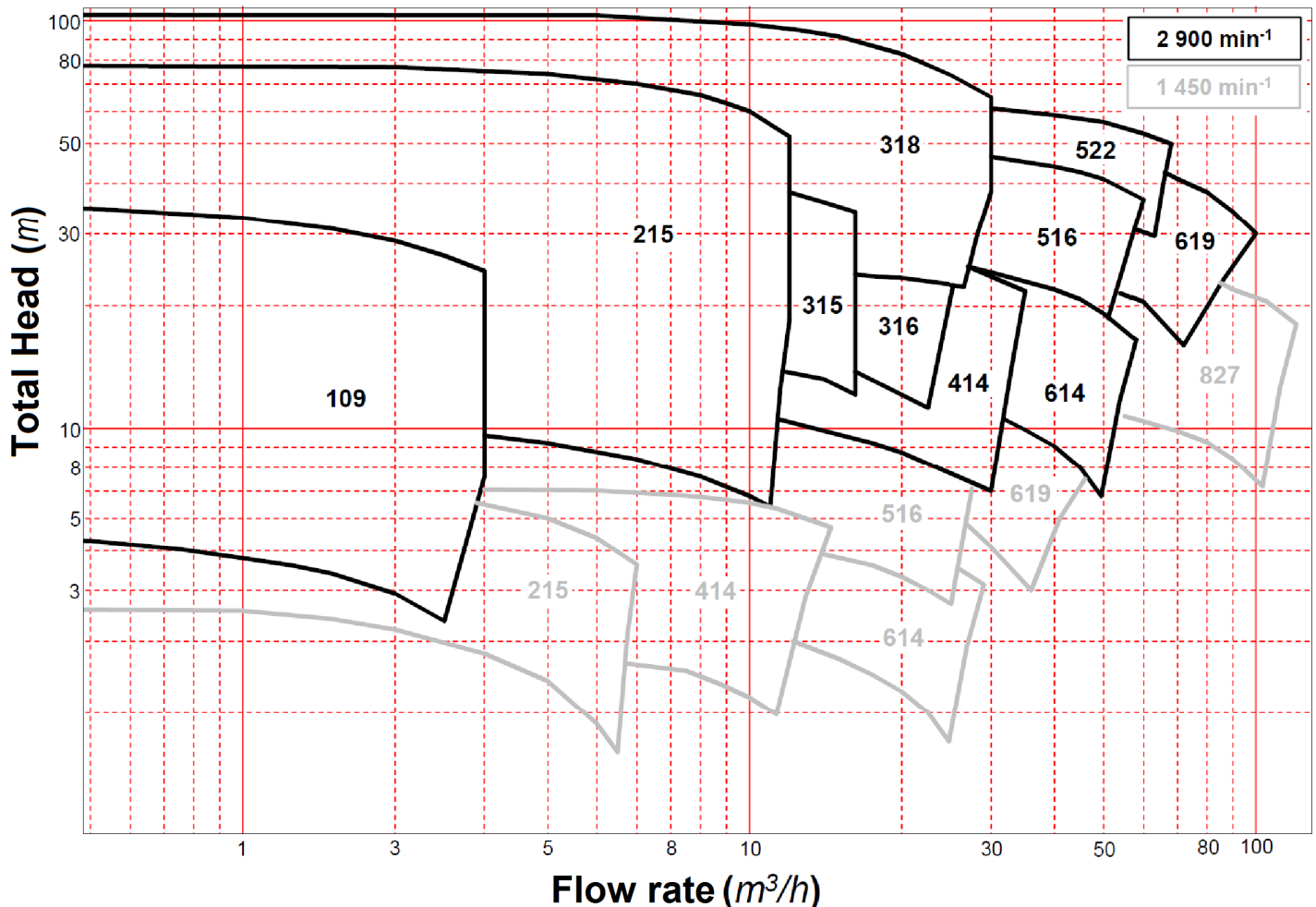
Different types of **API-conformed tightness** are available and the mechanical seals conform with **DIN 24 960**.



LIMITS OF USE

- Flow rate: 100 l/h to 100 m³/h
- Total head: < 105 m
- Operating temperature: - 20°C to + 150°C
- Operating pressure: < 10 bar
- Speed: < 3600 min⁻¹
- ATEX certification:  II 2 G II B T3/T4

SELECTION CURVES



Please contact us to see the 1450 rpm/min speed selection curves.

BUSINESS ACTIVITIES AND PRINCIPAL USE

Skid manufacturers - Engineering companies - Condensates - Oils - Detergents - Industrial water, etc.

SPECIFICATIONS

Basic components

- Pump body Nodular Cast Iron or Carbon steel
- Cover/diffuser/flange Nodular Cast Iron
- Impeller 316L stainless steel or Ductile Cast Iron
- Shaft 329LN Stainless steel (can be modified according to your needs)
- Gasket Aramid (can be modified according to your needs)

Mechanical seal

- Assembly Simple, double back to back, or tandem mechanical seal
 - Lubrication Process fluid
 - Friction face SiC/C
 - O-ring FPM
- } We'll help you define the best type of assembly and dynamic sealing adapted to your application.



Pump inlet and outlet connections

Type	MF 109	MF 215	MF 315	MF 316	MF 318	MF 414	MF 516	MF 522	MF 614	MF 619
Inlet	DN20PN16	DN32PN16	DN40PN16	DN50PN16	DN40PN16	DN40PN16	DN80PN16	DN65PN16	DN65PN16	DN80PN16
Outlet	DN15PN16	DN25PN16	DN32PN16	DN32PN16	DN32PN16	DN40PN16	DN50PN16	DN50PN16	DN65PN16	DN65PN16

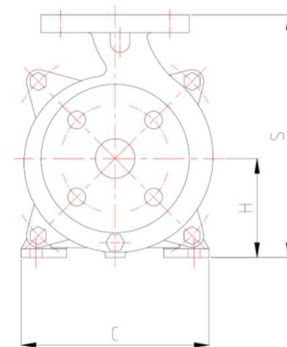
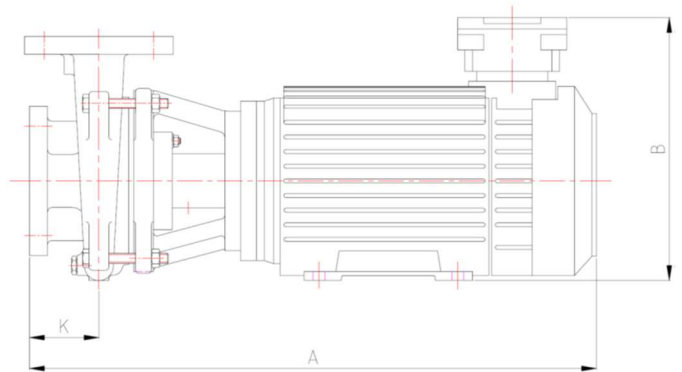
Motor Three-phase (other voltage on request)

Finishing Primer + epoxy paint RAL # 5017

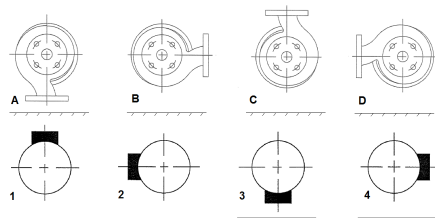
OVERALL DIMENSIONS

2900 min⁻¹

Type	Motor Power (kW)	Size Data						Weight (kg)
		K (mm)	A (mm)	B (mm)	C (mm)	H (mm)	S (mm)	
MF 109	0,37	55	405	193	140	71	151	12
MF 109/2	0,37	70	420	193	140	71	151	13
MF 109/3	0,55	92	442	193	140	71	151	15
MF 215	2,20	75	545	254	170	90	220	53
MF 215/2	2,20	105	545	254	170	90	220	53
MF 315	2,20	77	550	254	170	90	235	57
MF 315/2	3,00	87	580	278	200	100	245	66
MF 316	5,50	80	730	381	272	132	292	105
MF 318/2	9,00	123	760	391	272	132	292	108
MF 318/3	11,00	159	796	391	272	132	292	123
MF 414	3,00	70	600	278	200	100	245	55
MF 516	9,00	100	760	381	272	132	312	115
MF 522	18,50	115	950	470	350	180	380	200
MF 614	5,50	81	730	381	272	132	302	117
MF 619	15,00	80	835	445	318	160	380	225



You can choose the position of the outlet and inlet when ordering



Our standard is position C1.

Dimensions shown are for reference only and can be different according to the type of motor used.

PART NUMBER

MF	109	/2	F	-	95/90	-	0,37	-	2	A	-	12555
	Size	Number of impellers	Material in contact with the liquid		Ø of the impellers		Power in kW		Motor installed	Protection		Serial No.
	109	1 impeller	F Nodular Cast Iron						2 2 poles (# 2 900 rpm)	A ATEX		
	215	/2 2 impellers	A Carbon Steel						4 4 poles (# 1 450 rpm)	I non-ATEX		
	...	/3 3 impellers										
	614											
	619											

POMPES GROSCLAUDE

Parc du chêne - 29, rue du 35^{ème} régiment d'aviation

69 500 BRON – FRANCE

Tel: (33) 4 72 37 94 00

Fax: (33) 4 72 37 94 01

E-mail: info@pompes-grosclaude.fcom

Web: www.pompes-grosclaude.com

