

M series pumps


The offset-piston volumetric pumps in the **M** series are specially designed for a wide range of uses in the chemical, fine chemical, and agri-food industries and particularly for viscous products.

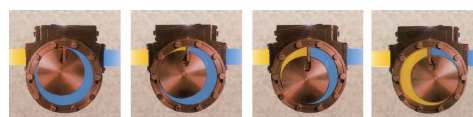
Thanks to their design, the **M** series pumps have the following advantages:

- 100% reversible and self-priming
- Long-lasting and low shearing rate
(thanks to low speed)
- Adapted for hard particulate passage
(due to a compensation spring)

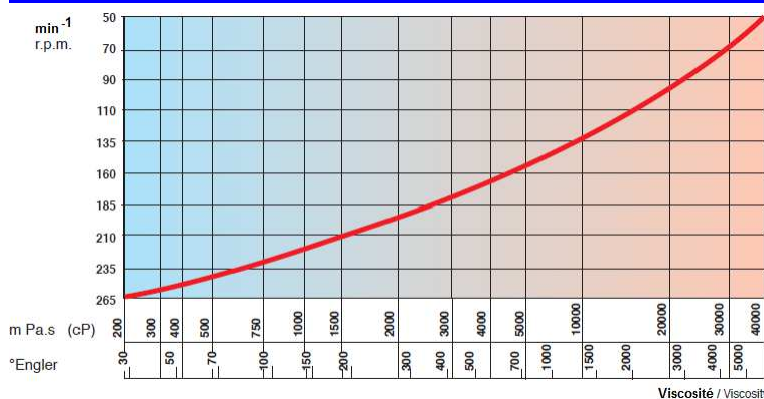
Different tightness assemblies available: from packing to metallic bellow mechanical seals.

LIMITS OF USE

- Flow rate: 400 l/h to 120 m³/h
- Total head: 1,5 to 10 bar
- Operating temperature: -75 to 250°C
- Operating pressure: < 10 bar
- Speed: < 400 min⁻¹
- ATEX certification:  II 2 G II B T4

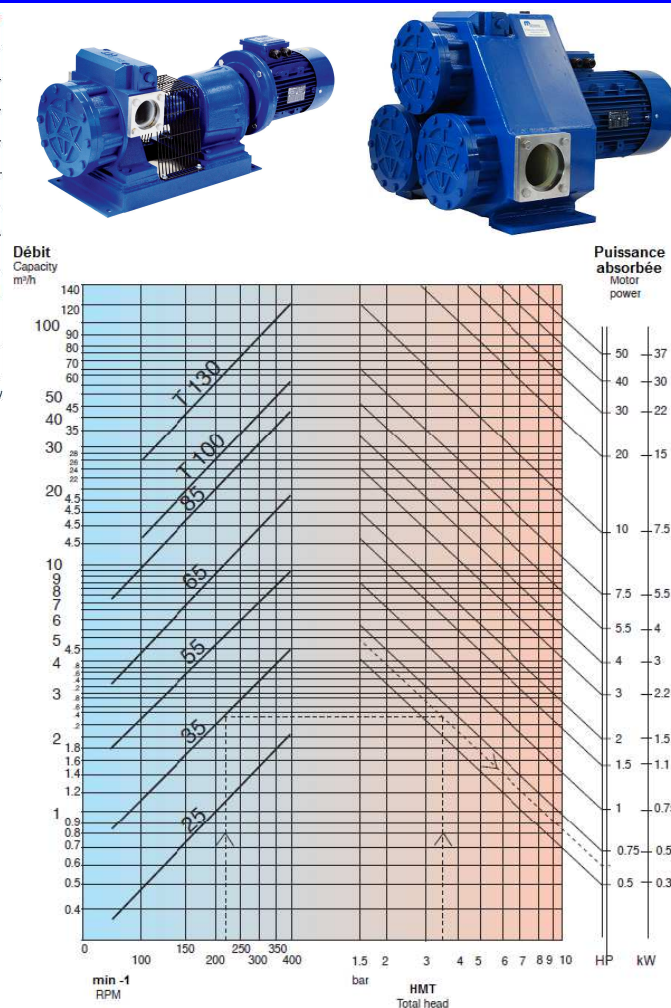


SELECTION CURVES



Taille Pompe	Tours/min Max	Débit Max M³/h	Volume déplacé Litres/Tour
M25	320	1,9	0,10
M35	320	4	0,21
M55	320	8	0,44
M65	310	15	0,94
M85	280	29	1,80
M100	260	40	2,60
T100	340	50	2,52
T130	340	108	5,40
T160	340	160	7,80

Maximum flow and speed recommended for lubricating liquids having a viscosity equal to 200 cP.



BUSINESS ACTIVITIES AND PRINCIPAL USE

Acids and alkalines, fatty acids, adhesives, liquid foods, asphalt, chocolate, glue, creams, detergents, emulsions, ink, non-lubricating fluids, glucose, fats, oils, isocyanates, bonding agents, slurries, heating oil, molasses, honey, oleine, wax, printing paste, paint, plasticisers, polyol, resin, soap, shampoo, silicates, solvents, surface-active agents, varnish...

POMPES GROSCLAUDE

Technical sheet n°: M-13-EN

SPECIFICATIONS

Basic components

See table and blow-up view below for materials in contact with liquids

Tightness and limits of use

Tightness	A	AT	B	D	E	F
Type	Double lip seal		Mechanical Seal		Metallic bellows MS	Packing
Materials	FKM (ex/ Viton)	PTFE + Housing in SS 304	Inox/C + FKM	Tu/C + FKM	SIC/SIC + FKM	PTFE
T°C	-20/+100°C	-90/+250°C	-20/+140		-20/+175°C	-100/+250°C
Pressure	< 10 bar		< 6 bar			

Pump inlet and outlet connections

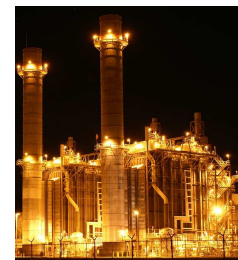
Type	M25	M35	M55	M65	M85	M100	T100	T130	T160
Ø I/O (mm)	25	36	52	62	84	100	100	130	160
Piping	1"	1 1/4"	2"	2 1/2"	3"	4"	3 to 4"	4 to 5"	6"

Motor

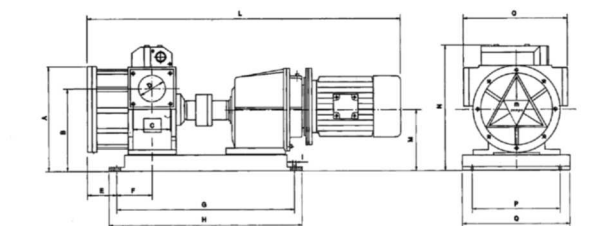
Three-phase (other voltage on request)

Finishing

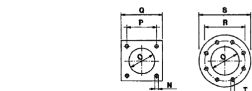
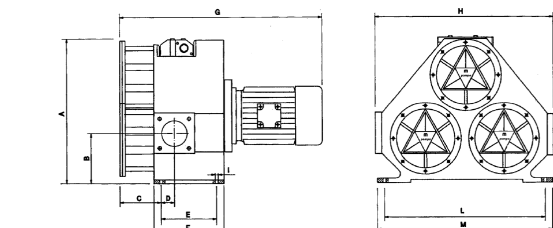
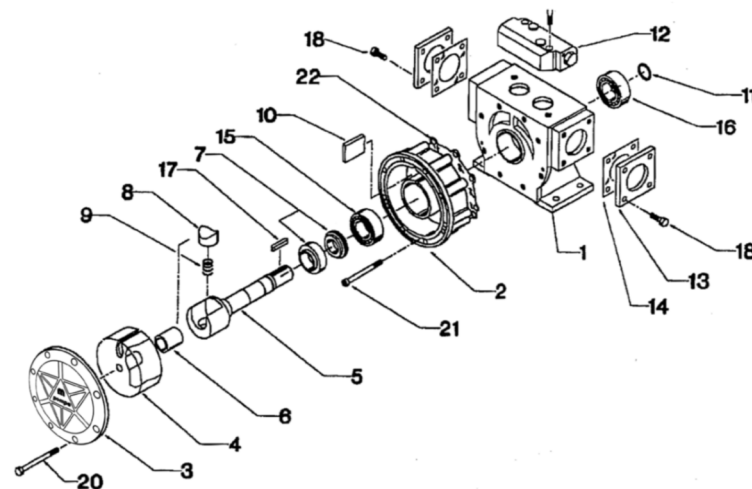
Primer + epoxy paint RAL # 5010



OVERALL DIMENSIONS AND BASIC COMPONENTS



Mod.	A	B	C	D	E	F	G	H	I	L	M	N	O	P	Q	HP	Kg.
25	176	147	52	25	30	45	300	330	9	525	125	-	140	155	175	0.5	25
35	238	195	48	36	40	70	370	410	12	670	160	285	200	180	225	1	45
55	254	198	65	52	40	85	410	450	15	770	160	304	240	220	265	2	70
65	304	242	75	62	63	85	495	535	15	920	190	535	265	220	265	3	95
85	379	305	92	84	74	104	520	560	15	1020	235	430	335	265	305	5.5	160



Mod.	A	B	C	D	E	F	G	H	I	L	M	N	O	P	Q	R	S	T	HP	KG
T100	510	160	130	40	200	270	765	574	15	450	500	14	114	115	110	150	-	-	7.5	310
T130	605	185	148	62	280	340	958	668	15	510	560	18	140	140	140	180	-	-	15	465
T160	720	220	160	85	370	430	1150	800	18	620	680	-	166	-	-	241.5	290	15	30	690

Ref.	Identificación	Type 1	Type 2	Type 5	Type 6	Type 7	Type 8
1	Housing	Cast Iron FT25 D	Cast Iron FT25 D		Steel Nickel-Plated	SS 304	Cast Iron FT25 D
2	Body		Bronze CuSn12	SS 304	Cast Iron Ni-resist	SS 304	
3	Flange						
4	Piston	Carbon Steel C39	SS 304				
5	Shaft						
6	Bushing	Bronze CuSn8P					
8	Bushing support	Brass CuZn40Pb2					
9	Spring	Steel C72	SS 302				
10	Diaphragm	Bronze CuSn6					
12	By-pass	Cast Iron FT25D			Steel Nickel-Plated	SS 304	Cast Iron FT25D
13	Taylor made flange to be welded	Acero A33			SS 304		Steel A33
14	Gaskets	Flexoid (Cellulose)					

Dimensions shown are for reference only and can be different according to the type of motor used.

PART NUMBER

M	35	-	Type 1	-	A	-	0,75	-	I	-	27135
	type		Material in contact with the liquid		Tightness of the pump		Motor				Serial No.
	25		Type 1 See above		A See above		Power en kW		Protection		
	35		Type 2 See above		AT See above				A ATEX		
				I non-ATEX		
	T160		Type 8 See above		F See above						

POMPES GROSCLAUDE

Parc du chêne - 29, rue du 35^{ème} régiment d'aviation

69 500 BRON – FRANCE

Tel: (33) 4 72 37 94 00

Fax: (33) 4 72 37 94 01

E-mail: info@pompes-grosclaude.com

Web: www.pompes-grosclaude.com

