

# LGF Series pumps


The centrifugal pumps in the **LGF** series are specially designed for industrial use of **thermal fluids** and for **environmental protection**.

The **LGF** pumps are designed to avoid any leaks, even fugitive ones, of products pumped outdoors. This specific tightness is obtained using magnetic coupling that can be used with either **hot or cold** products.

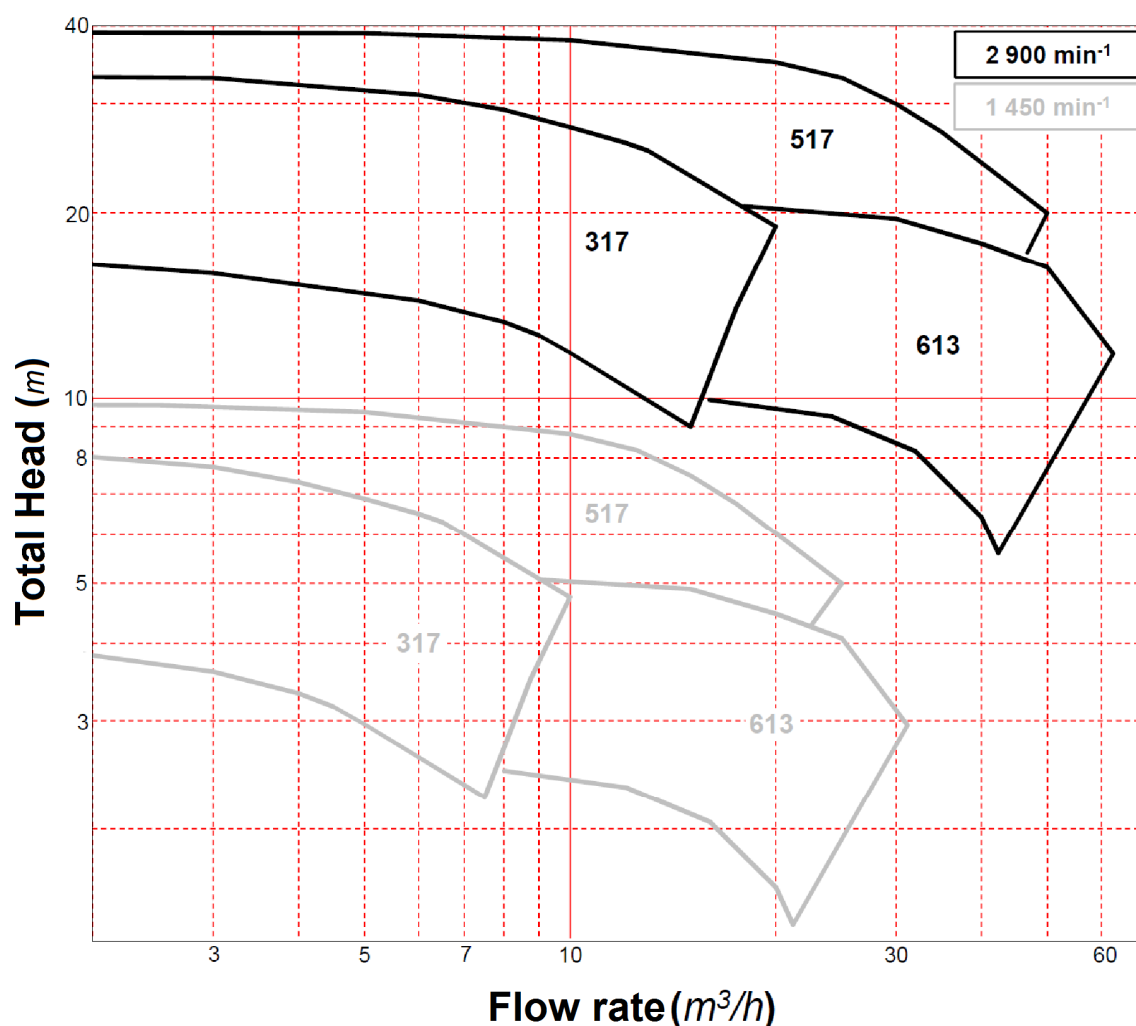
Because of their monoblock design and **In-Line** assembly, **LGF** pumps take up limited space, which makes their integration into compact "Skid" assemblies much easier.



## LIMITS OF USE

- Flow rate: 1 to 60 m<sup>3</sup>/h
- Total head: < 40 m
- Operating temperature: - 30°C to + 300°C
- Operating pressure: < 10 bar
- Speed: < 3600 min<sup>-1</sup>
- ATEX certification:  II 2 G II B T2/T3/T4

## SELECTION CURVES



## BUSINESS ACTIVITIES AND PRINCIPAL USE

Thermal fluids - Skid manufacturers - Engineering companies - Chemical and fine chemical industries - Pharmaceutical industry - Heat transfer fluids (*environmental protection*)

**POMPES GROSCLAUDE**

technical sheet n°: MGX-13-EN

## SPECIFICATIONS

### Basic components

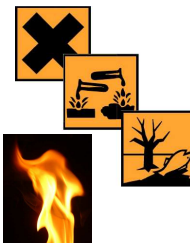
- Pump body
- Cover/diffuser/flange
- Impeller
- Shaft
- Gasket

NodularCast Iron  
Nodular Cast Iron  
Nodular Cast Iron  
329LN Stainless steel  
Aramid

To better respond to your requirements, our expertise in the metalworking industry is at your service:

***Stainless steel 316L, Hastelloy, Duplex...***

(can be modified on request)



### Tightness

- Type
- Can
- Mobile mounted on block
- Magnet material
- Lubrication
- Can gasket

Magnetic coupling  
Non-magnetic alloy  
Silicon carbide  
Samarium cobalt  
Process fluid  
FKM (ex: FEP covered)

### Pump inlet and outlet connections

Type	LGF 317	LGF 517	LGF 613/34
Inlet	DN32PN16	DN50PN16	DN65PN16
Outlet	DN32PN16	DN50PN16	DN65PN16

### Motor

- Protection
  - Three-phase
- ATEX or non ATEX  
(other voltage on request)

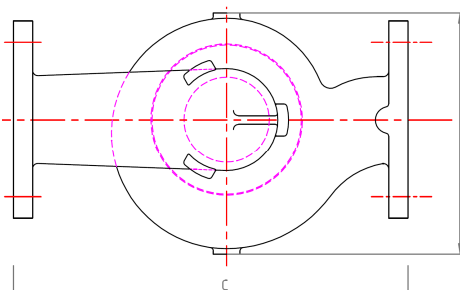
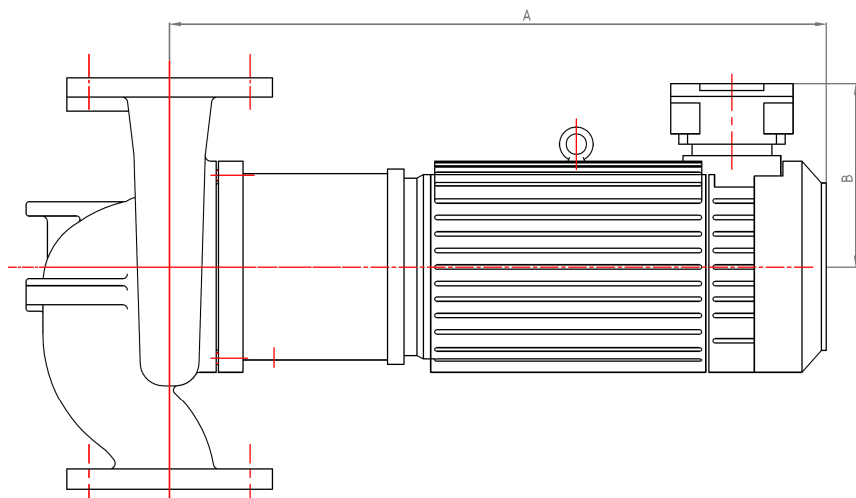
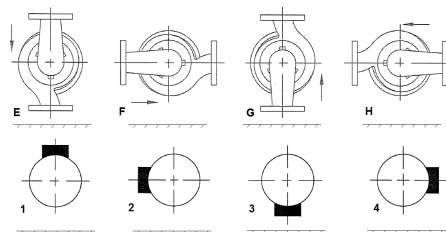
### Paint

- Primer + epoxy paint RAL # 5017
- (can be modified on request)

## OVERALL DIMENSIONS

Type	Motor		Size Data				Weight (kg)
	Power (kW)	Number of poles	A (mm)	B (mm)	E (mm)	D (mm)	
<b>LGF 317</b>	0,75	4	535	158	260	210	33
<b>LGF 317</b>	4,00	2	590	164	260	210	55
<b>LGF 517</b>	1,10	4	470	158	360	227	50
<b>LGF 517</b>	7,50	2	670	250	360	227	110
<b>LGF 613/34</b>	0,75	4	470	158	340	230	50
<b>LGF 613/34</b>	5,50	2	670	250	340	230	110

You can choose the position of the outlet when ordering



Dimensions shown are for reference only and can be different according to the type of motor used.

## PART NUMBER

LGF	317		F	-	165	-	2,2	-	2	I	-	26503
Type	Size	Number of impeller	Material in contact with the liquid		Ø of the impellers		Power in kW		Motor installed			Serial No.
LGF Magnetic coupling	317	1 impeller	F Nodular Cast Iron						2 2 poles (# 2 900 rpm)	Protection		
	517		A Carbon Steel						4 4 poles (# 1 450 rpm)	A ATEX		
	613/34									I non-ATEX		

## POMPES GROSCLAUDE

Parc du chêne - 29, rue du 35<sup>ème</sup> régiment d'aviation

69 500 BRON – FRANCE

Tel: (33) 4 72 37 94 00

Fax: (33) 4 72 37 94 01

E-mail: [info@pompes-grosclaude.com](mailto:info@pompes-grosclaude.com)

Web: [www.pompes-grosclaude.com](http://www.pompes-grosclaude.com)

