


# ALFA V vertical pumps

The single stage, vertical axis centrifugal pumps in the **ALFA V** series are designed around hydraulics complying to **ISO 2858** or **NF 44 121**.

The pump's support base can serve as a tank closure, with a standpipe for liquid outlet.

According to the size of your tank, the length under the mounting plane can reach **6 meters**, if needed.

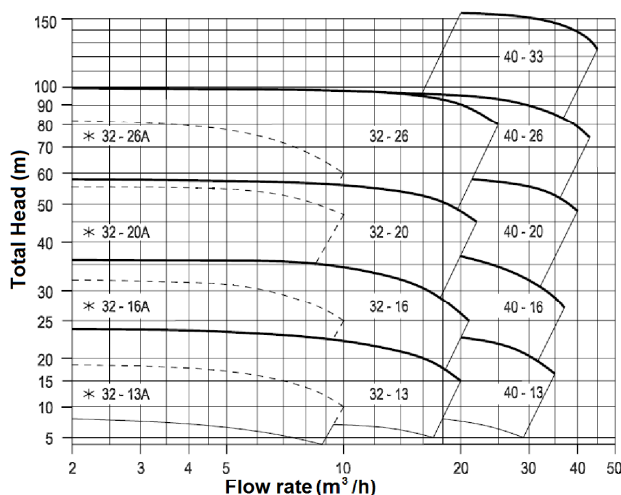
## LIMITS OF USE

- Flow rate: 2 m<sup>3</sup>/h to 3,000 m<sup>3</sup>/h
- Total head: <150 m
- Operating temperature: - 25°C to + 140°C
- Speed: < 3600 min<sup>-1</sup>
- ATEX certification:  II 2 G II B T3/T4

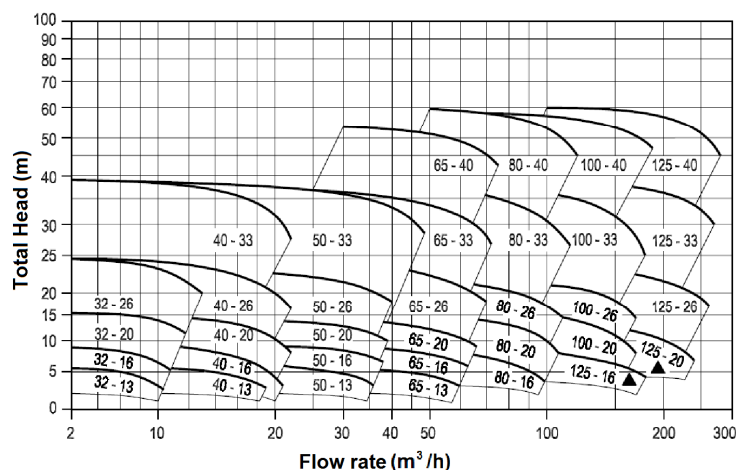


## SELECTION CURVES

**2900 min<sup>-1</sup>**



**1450 min<sup>-1</sup>**



# SPECIFICATIONS

## Basic components

- Pump body
  - Cover/diffuser/flange
  - Impeller
  - Shaft
  - Gasket
- Carbon steel  
Carbon steel  
Carbon steel  
420 stainless steel  
Aramid

To better respond to your requirements, our expertise in the metalworking industry is at your service:

***Stainless steel 316, Hastelloy, Duplex...***

(can be modified according to your needs)

## Mechanical seal

- Assembly
  - Lubrication
  - Friction faces
  - O-ring
- Simple, double back to back, or tandem mechanical seal  
Process fluid  
SiC/C  
FPM

We'll help you define the best type of assembly and dynamic sealing adapted to your application.

## Pump inlet and outlet connections

Type	32-	40-	50-	65-	80-	100-	125-	150-	200-	250-	300-
Inlet	DN50PN16	DN65PN16	DN80PN16	DN100PN16	DN125PN16	DN125PN16	DN150PN16	DN200PN16	DN250PN16	DN300PN16	DN350PN16
Outlet	DN32PN16	DN40PN16	DN50PN16	DN65PN16	DN80PN16	DN100PN16	DN125PN16	DN150PN16	DN200PN16	DN250PN16	DN300PN16

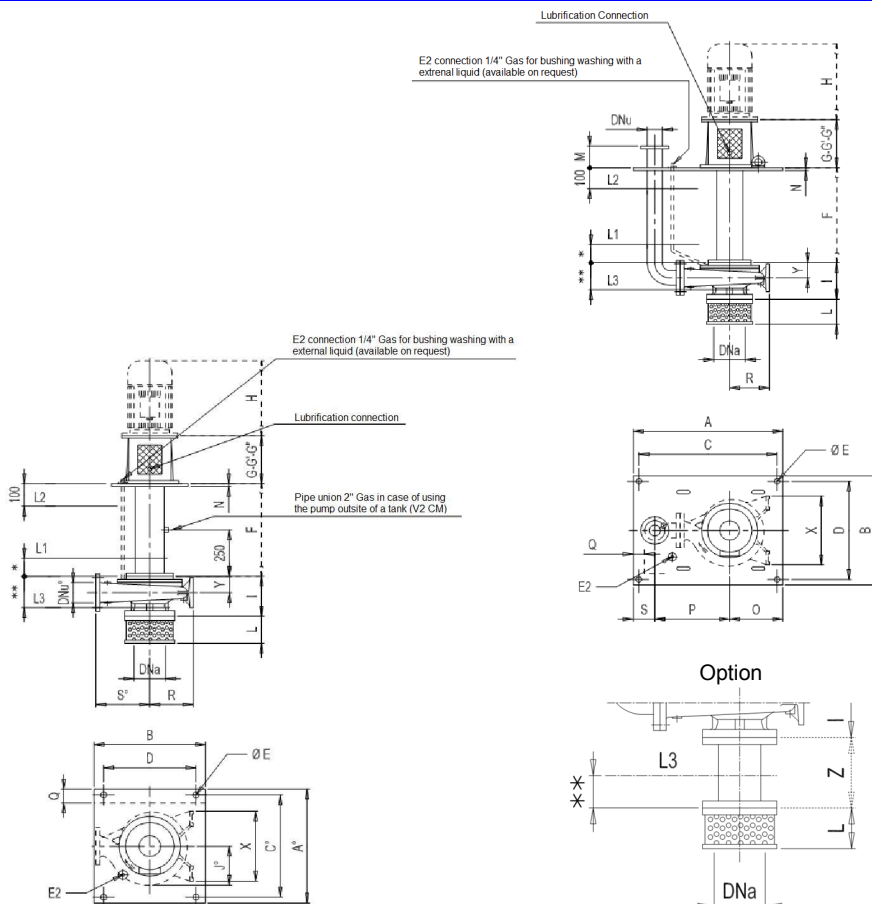
## Paint

- Primer + final paint (RAL 5017)
- (can be modified on request)



# OVERALL DIMENSIONS

Type	PN16 Flanges			A	A'	B	C	C'	D	E	M	N	L1	L2	L3
	Dna	Dnu	Dnu"												
32-13 e 13A															
32-16 e 16A	50	40	32	600	450	400	560	410	360	12	120	10	80	100	100
32-20 e 20A				650	500	430	610	460	390						
32-26 e 26A															
40-13				600	450	400	560	410	360	12		10			
40-16															
40-20	65	50	40								120		80	100	100
40-26				800	500	550	760	460	510	14		15			
40-33					550			510							
50-13				650	450	430	610	410	390	12		10			
50-16															
50-20	80	65	50								120		80	100	100
50-26				800	500	550	760	460	510	14		15			
50-33					550			510							
65-13					450	430	610	410	390	12		10			
65-16															
65-20	100	80	65	650	500	550	810	460	510	14	120	15	80	100	100
65-26															
65-33				700	600	800		550		18	150	18	100		
65-40				1050	700	1000		650							
80-16				850	500	550	810	460	510	14	120	15	80	100	100
80-20					550			510							
80-26	125	100	80												
80-33				1050	700	700	1000	650	650	18	150	18	100	100	100
80-40															
100-20	125	125	100	1000	550	600	960	510	560	16	120	15	80	100	100
100-26				1050	700	700	1000	650	650	18	150	18	100	100	100
100-33				1050	700	700	1000	650	650	18	150	18	100	100	100
100-40				1050	700	700	1000	650	650	18	150	18	100	100	100
125-16				1000	550	600	960	510	560	16	120	15	80		
125-20															
125-26	150	150	125	1200	700	750	1150	650	700	18	150	18	100	100	100
125-33															
125-40															
150-26				1200	700	750	1150	650	700	18		18		100	
150-33															
150-40	200	150	150	1350	900	900	1300	850	850	20	150	20	100	100	120
150-50															
200-20	200	200	200	1300	800	800	1260	760	760	18	120	18	80		100
200-26				1400	850	850	1150	800	800						
200-33															
200-40	250	200	200	1450	900	900	1400	850	850	20	150	20	100	100	120
200-50				1600	1050	1050	1550	1000	1000						
250-33				1650	950	950	1600	900	900	20	150	20	100	100	120
250-50	300	250	250	1750	-	1300	1700	-	1250						
300-33	350	300	300	1950	1200	1250	1900	1150	1200	20	150	20	100	100	120



# PART NUMBER

ALFA V	125-16	FT	164	30	2	I	12555
E/S connections		Material in contact with the liquid	Impeller diameter		Motor		Serial No.
32-__	See above	F Nodular Cast Iron		Power (kW)	2 2 poles (# 2 900 rpm)	Protection	
40-__		A Carbon Steel			4 4 poles (# 1 450 rpm)	A ATEX	
...		XF1 Stainless steel 316				I non-ATEX	
300-__		... On request					

# POMPES GROSCLAUDE

Parc du chêne - 29, rue du 35<sup>ème</sup> régiment d'aviation

69 500 BRON – FRANCE

Tel: (33) 4 72 37 94 00

Fax: (33) 4 72 37 94 01

E-mail: [info@pompes-grosclaude.com](mailto:info@pompes-grosclaude.com)

Web: [www.pompes-grosclaude.com](http://www.pompes-grosclaude.com)

